

Frequently asked questions

How were the concept designs developed?

Workshops were held with staff, students and other stakeholders to understand what kinds of learning and recreation spaces Kingscliff Public School needs and wants.

These factors, together with current trends in education and learning, were used to guide the scope of work and concept design process.

Are plans likely to change?

Schematic designs are still being finalised in consultation with the Principal and staff, and we are working through the planning approval and tender process.

Some aspects of the design may change as we move through these processes, but the overall approach to the upgrade is likely to remain the same.

Will we need to move to a pop-up school during construction?

The preferred approach is to deliver the upgrade in stages so that the school can continue to operate on the current site during construction.

The staging approach and any impacts on school operations will be communicated after the main works contractor is engaged.

What can I expect during construction?

During construction our contractors will follow rigorous processes to ensure the safety of students, staff, contractors, parents and other visitors.

We will work closely with the Principal to minimise any disruption throughout the project.

When will the project be finished?

The forecast completion date is currently late 2021 however the project team is investigating options for completing the project more quickly so that the school can be handed back to the community as soon as possible.

We will keep you informed of any changes to the planned completion date.

How will parking and traffic be managed during and after construction?

We are in the process of finalising a Traffic Management Plan for the project which will be submitted to Tweed Shire Council as part of the DA.

Once the DA has been submitted Council will notify adjoining and neighbouring owners that may be affected by the development. This is when you can provide feedback on traffic management.

How can I get involved?

Your feedback is important to us. We are committed to working together with our school communities and stakeholders to deliver the best possible learning facilities for students.

It is not always possible to implement everyone's suggestions but we will work with school communities to ensure we have considered what is important to you.

Stay informed



Website

Stay up to date by visiting the School Infrastructure NSW website schoolinfrastructure.nsw.gov.au



Email

Contact the Community Engagement team by emailing schoolinfrastructure@det.nsw.edu.au



Phone

Contact us between 9am and 5pm, Monday to Friday on **1300 482 651**

Kingscliff Public School upgrade

Information pack

March 2020



Artist impression of the Kingscliff Public School upgrade

The NSW Government is investing \$6.7 billion over four years to deliver more than 190 new and upgraded schools to support communities across NSW. In addition, a record \$1.3 billion is being spent on school maintenance over five years. This is the largest investment in public education infrastructure in the history of NSW.

A project is underway to upgrade Kingscliff Public School. The upgrade will include:



32 new permanent, innovative and flexible learning spaces



New play spaces and outdoor amphitheatre



Extended school hall



New library



Redeveloped school entry

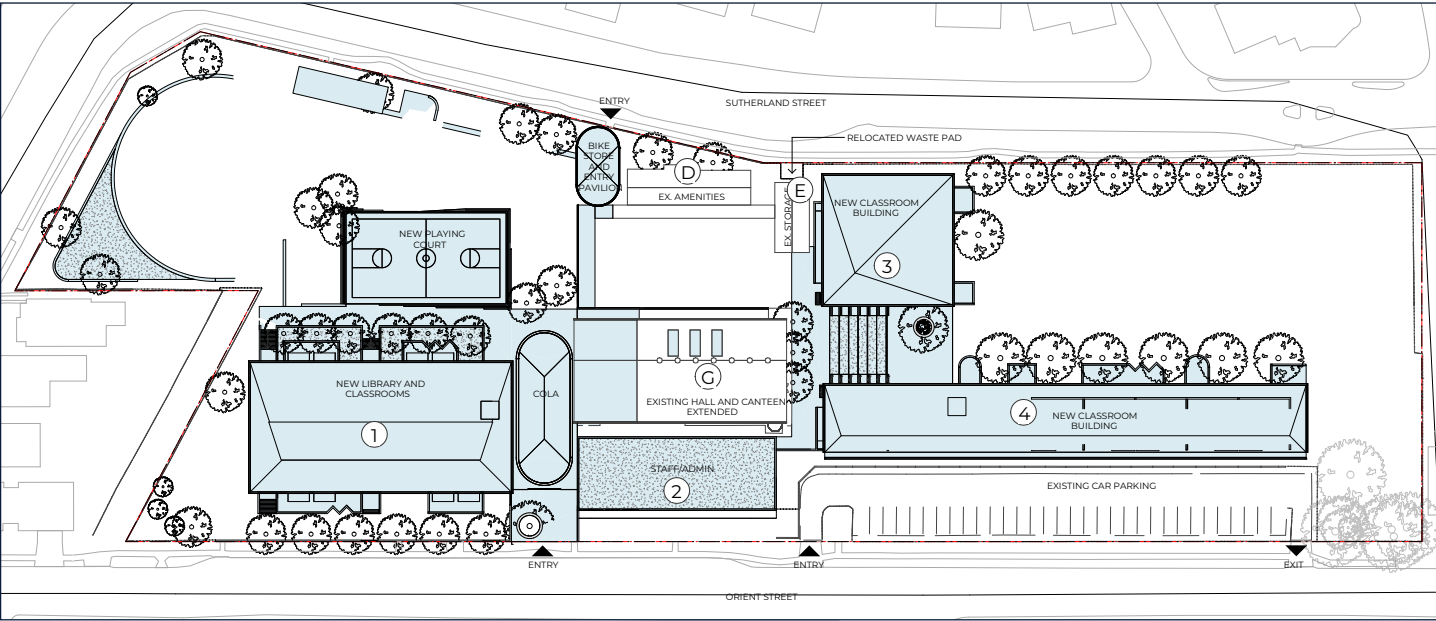
Project values

- Appreciation of the natural environment
- Learning supplemented with extra-curricular opportunities
- Supporting staff as a professional community
- Enabling future focused learning and flexibility in learning

Desired spaces

- Outdoor spaces for sports and play
- Flexible learning spaces
- A more connected campus
- New Library
- Out of School Hours Care

Proposed site plan



Innovative learning spaces

All existing classrooms, including demountables, will be demolished and 32 new innovative and flexible learning spaces will be built to facilitate a range of learning modes and activities.



An example of an innovative learning space

Progress summary

Concept designs for the upgrade have been developed and schematic designs are being prepared.

A tender has been released for an early works package (Stage 1) and a contractor will be engaged in March.

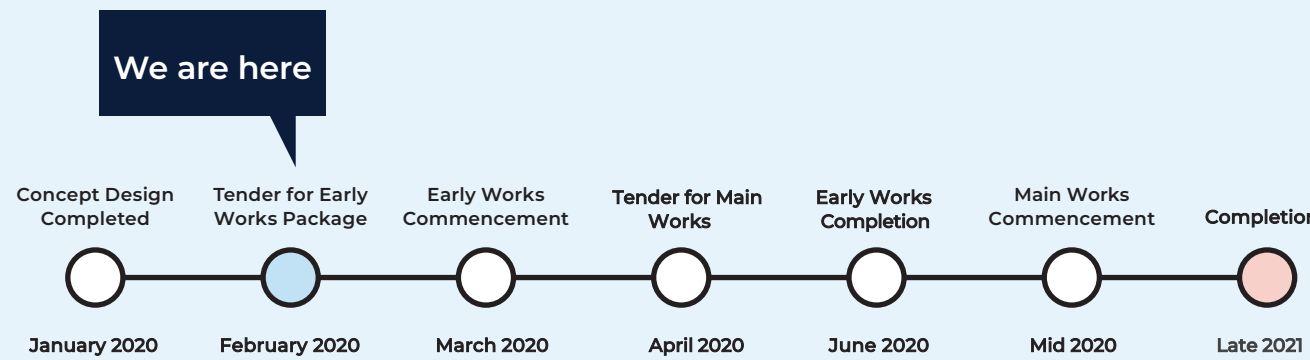
A main works (Stage 2) tender package will be prepared once schematic designs have been completed.

Early works

Early works at Kingscliff Public School will include:

- Extension of the existing hall
- Demolition of the existing canteen
- Construction of a new canteen, storeroom and OOSH requirements.

Timeline



Artist impression of redeveloped school entry