



## DATES TO REMEMBER

<b>Thursday 17 June</b>	Parents Online Guardian Workshop—6pm
<b>Friday 18 June</b>	K-2 Athletics Carnival
<b>Friday 18 June</b>	Stage 3 Yuli
<b>Monday 21 June</b>	NAIDOC Assembly
<b>Tuesday 22 June</b>	Stage 3 Author visit
<b>Friday 25 June</b>	<b>Last day of Term 2</b>
<b>Tuesday 13 July</b>	<b>Students Return for Term 3</b>
<b>Friday 16 July</b>	3-6 Athletics Carnival

## PRINCIPAL NEWS

Hello everyone,

It is good to be back at school this week. It is so lovely to see all the smiling faces and of course, make it back for photo day!

School photos were taken today. How lovely it was to see everyone in their school uniform. The year 6 students look amazing in their "seniors' shirts". Photos will be ready in the first few weeks of next term.

Thank you to all the parents and carers who have already signed up to the 'Sentral' parent portal. This portal is assisting us to further reduce our paper usage. In the transition to paperless school reports, if you do not have portal access and need your child's report printed, please contact the office. Thank you for your support in this transition.

This Friday is going to be a busy day at Kingy. We will be holding our K-2 Athletics carnival, as well as our Coastal Learning Community (CLC) Yuli activity day, for our ATSI year 5 and 6 students. This will be the last time that we will be able to hold an athletics carnival on the school oval, due to the commencement of construction next term. There will be over 100 students from our CLC (primary and high schools) visiting us and using our hall and other playground spaces,



<https://www.facebook.com/KingscliffPublicSchool>



[https://www.instagram.com/kingscliff\\_ps/](https://www.instagram.com/kingscliff_ps/)

therefore, we ask for all K-2 parents and carers, watching the K-2 Athletics carnival, to remain in the car park area to watch. It's a great vantage point! We have moved the running tracks over closer to the car park wall, to make sure everyone can see. Thank you for being so understanding.

Tomorrow night (Thursday, 17/6/21) we have the parent information session run by Online Guardians, starting at 6pm. Please ensure that you register either by the link that has been published on seesaw, or the note that was sent home. This is a really important night for all parents K-6, especially if your child uses Roblox, Tik Tok and any other online gaming or communication tools. It's great to see so many parents wanting to find out how to keep their kids safe online.

Next Monday (21/6/21), we have our NAIDOC Assembly. This will be the opening event for our NAIDOC week and all classes will be participating in activities on different days. Parents and carers are invited to join us for this assembly, in the school hall. Please be seated ready for a 10 am start. Thank you in advance for supporting this event

Kind Regards

**Diana Foley**  
Principal

## SURFSIDE BUS LINES

### Bus Incidents

**131500** or [www.transport.nsw.gov.au](http://www.transport.nsw.gov.au)

(go to: Contact Us, Complaints, Buses)

## STUDENT ATTENDANCE

Reminder, if students are absent from school, the parent/carer will receive an automated SMS requesting you contact the school via School Stream, Seesaw or phone to provide an explanation for the absence.



## CANTEEN CORNER

School Canteen operates four days each week - Tuesday, Wednesday, Thursday & Friday



**PLEASE HAVE ORDERS IN BY 9:00 AM**

### VOLUNTEER ROSTER

<u>Thursday 17 June</u> Gail <u>Friday 18 June</u> Jean      Kylie Debbie	<u>Thursday 24 June</u> Kim <u>Friday 25 June</u> Janet      Kylie Ashlee      Heather
---	--

### **Volunteers Required**

***If you are interested in helping ,  
please contact the office on 02 6674 1467.***

*New volunteers will require Working With Children Checks.  
Please see the office for the paperwork.*

### **PAYMENT OPTIONS**

**EFTPOS** - at the school office only

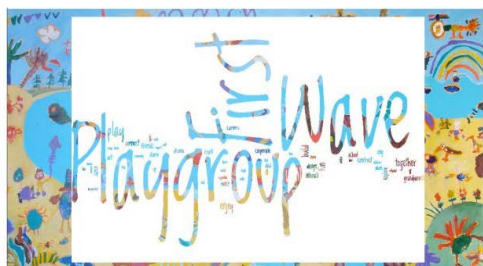
**Online** - via the school website 'Make A Payment' tab.

**Please include online payment receipt number on the paper bag.**

**Cash** - correct money in the bag is appreciated.

**All orders require a paper bag with the students name, class and order details.**

**REMINDER - CANTEEN CLOSED MONDAYS**



Kingscliff Public School

first wave playgroup

Thursdays 9:00-11:00am

During SCHOOL TERM

@ KINGSLIFF Primary School Hall

**\$5 Per Session**

A place for parents and carers with children 0-5 to play with their child/ren in a supported environment and connect with other parents.

For further enquiries call the school

(02) 66741467

## Office News

### Parent Portal

The Parent portal can now be accessed from the school website. This portal will allow you to access your child's Semester 1 report which will be released at the end of next week. You will also be able to view your child's attendance. Emails have been sent out with details on how to register including your unique access code. If you did not receive this, or you are having trouble in accessing the portal please send an email to the school email, kingscliff-p.school@det.nsw.edu.au.

### KIMP Accounts

All KIMP accounts for Term 2 will need to be finalised before the end of this term in order for your child to continue next term. Thank you.

### Stage 2 (Yrs 3&4) and Stage 3 (Yrs 5&6) Camp

Final payment for both camps are due by Friday 23 July at the latest. Medical Information forms can be returned to the office as soon as possible.

**OFFICE HOURS 8.30am to 3.15pm**

 **Thank You!** 



**CONGRATULATIONS**



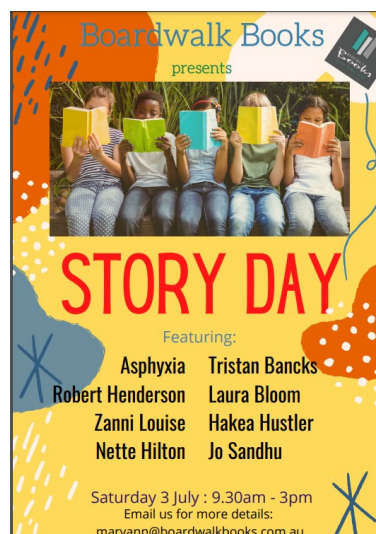
**PBL WINNERS**

Dennis - 1H

Zac - 5/6C

Antonia - 5/6C

Kai - 5/6P



## PBL Update

This week in PBL we are looking at **Caring for People, Places and Property** and in particular how we dispose of rubbish responsibly around our school.

### Brainstorm:

What are the different bins around our school?



#### General waste

What can go in?

- Plastics
- Food
- Any waste that cannot go in the recycling



#### Recycling

What can go in?

- Paper
- Small pieces of cardboard



#### Return and Earn

What can go in?

- Cans
- Plastic bottles

Let's reduce our waste and clean up our school!

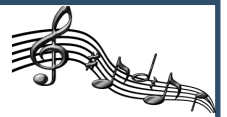
Always put your rubbish in the correct bin!

Care about our local environment, keep it clean!

Remember we are a Nude Food School! Reduce the rubbish you bring to school.



## KIMP NEWS



A big thank you to everyone for rolling with the changes for KIMP this week to accommodate the public holiday. I think we are all looking forward to a break so we can recharge our musical batteries for some exciting performances next term!

Intermediate Band performances next Monday 12pm!

Our Intermediate Band are excited about performing next Monday for parents and Stage 2 classes. The performance will be in the hall at 12pm. Any parents coming are just asked to sign in with the QR code when they arrive.

Rehearsals are normal next week ... we love that!

Monday 7.45am Intermediate Band,  
Tuesday 7.30am Senior Band,  
Wednesday 7.45am Big Band.

Have a great week.

Nicky Cooper  
(and Mr Walsh and Mr Moodie!)  
Kingscliff Instrumental Music Program  
[nicole.cooper15@det.nsw.edu.au](mailto:nicole.cooper15@det.nsw.edu.au)

More fun in the **Loose Parts Play** program!



## SPORTS NEWS



### CROSS COUNTRY

Congratulations to all students who participated in the North Coast Cross Country last week in Lismore. A special congratulations to Elliot M who made it through to represent the North Coast at the State Championships in Sydney next term.

### RUGBY UNION

Good luck to Finn, Lachie, Harvey, James and Charlie who will be representing the Far North Coast Rugby Union team in Grafton next week.



# NC Cross Country



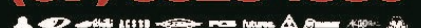
**THE  
BOARD  
LAB**

**WE BUILD  
SURFBOARDS**  
**(07) 5523 1830**



**THE  
BOARD  
LAB**

**PREMIUM  
BOARD STORE  
AND HARDWARE**  
**(07) 5523 1830**



**Kingscliff HEALTH**

**MEDICAL CENTRE  
OPEN 7 DAYS**

38-42 Pearl St, Kingscliff, NSW 2487  
02 6670 1400 | [kingscliffhealth.com.au](http://kingscliffhealth.com.au)

THE EASIEST WAY TO BUY  
YOUR NEW CAR

**motor\$cout** .com.au | 1300 341 751 | [www.MotorScout.com.au](http://www.MotorScout.com.au)

**A1 SKIPS**

DON'T STRESS - LET US GET RID OF YOUR MESS

**0418 992 111**

**ARROW**

**CONCRETE CUTTING**

**0413 871 174**

"Concrete is not hard for us!"

**wellness  
simplified**

Leesa Young  
Naturopath & Clinical Nutritionist

Stress ~ Hormones ~ Sleep

- simple, practical advice
- women's & children's health

leesa@leesayoung.com - 0400 077 220  
Kingscliff + online appointments available

**Mi Xue**

Acupuncture & Traditional Chinese Medicine

0403 810 068 | [michelle@mixue.com.au](mailto:michelle@mixue.com.au)

[WWW.MIXUE.COM.AU](http://WWW.MIXUE.COM.AU)