

DATES TO REMEMBER

Wednesday 19 May	FNC Dance at Lismore
Thursday 20 May	All schools Rugby League Competition
Friday 21 May	FNC Cross Country
Tuesday 25 May	PSSA Rugby Union Gala Day

PRINCIPAL NEWS

This week we have our parent get together for all our families. The P & C have kindly organised a coffee van with free coffee for all parents and carers. I encourage you to come along and have a chat, meet other parents and talk to staff. It is on Thursday morning from 8am - 9am. We also have our playgroup operating, so if you have young kids, please feel free to stay and see what our playgroup is all about. I hope to see you all there.



This term we have lots of PSSA sporting teams playing against other schools and representing KPS. The feedback I have had so far is outstanding and all our teams have played so well. I would like to thank the parents that have helped with travel and continue to do so in the coming weeks. I would also like to thank our amazing teachers too that have given time for training and the organisation of these events.

This week we also have our school dancers competing at the Far North Coast Dance Festival. I wish them well and would like to thank our dance coach Cassie along with Alisha McMahon and Michelle Thomas for working with our dance group and organising the trip to Lismore for them to participate. Mrs Foley is representing our school on the night and going along to watch.

Again I would like to thank all the parents for adapting to our new pick up areas in the afternoon and getting family name signs up in their cars. We are getting through the cars a lot quicker, due to parents moving right to the end of the pick up zone in Orient street.

PICK UP POINT



<https://www.facebook.com/KingscliffPublicSchool>



https://www.instagram.com/kingscliff_ps/

Thank you also to everyone for looking after our neighbours and not parking across driveways or on lawns.

Have a great week everyone and I look forward to seeing you all on Thursday at the coffee morning.

Kind Regards

Mrs Mirana
Relieving Principal



CONGRATULATIONS



PBL WINNERS

Oliver - KN	Finlay - 2S
Avalon - 3/4A	Zander - KN
Jaylah - 5/6S	Noah - 5/6K

SPORT NEWS

HOCKEY



Good luck to Bianca who is representing the North Coast at the NSW PSSA Hockey Championships in Woolongong this week. We are so proud of you!



CANTEEN CORNER

School Canteen operates four days each week - Tuesday, Wednesday, Thursday & Friday



PLEASE HAVE ORDERS IN BY 9:00 AM

VOLUNTEER ROSTER

<u>Thursday 20 May</u>		<u>Thursday 27 May</u>	
Ange	Carly	Volunteers required	
<u>Friday 21 May</u>		<u>Friday 28 May</u>	
Jean B	Debbie	Melissa	Kylie
Kylie	Leeah	Ange	Ashlee
Tanci		Janet	

Volunteers Required

*If you are interested in helping ,
please contact the office on 02 6674 1467.*

*New volunteers will require Working With Children Checks.
Please see the office for the paperwork.*

PAYMENT OPTIONS

EFTPOS - at the school office only

Online - via the school website 'Make A Payment' tab.

Please include online payment receipt number on the paper bag.

Cash - correct money in the bag is appreciated.

All orders require a paper bag with the students name, class and order details.

This week we have started to use our beautiful Friendship Tree. The Friendship Tree is a place where students can go when they can't find someone to play with and our Friendship Buddies will be checking it regularly to make sure everyone feels safe and included.



Office News

Life Education

Life Education van will be visiting KPS in weeks 7,8 and 9. Please return notes and payment to the front office by Thursday 27th May. Thank you .

KIMP fees

A reminder that KIMP fees for term 2 are due **THIS FRIDAY (21 May)**. Your prompt payment is appreciated.

Stage 2 (Yrs 3&4) Camp

The \$50 deposit for Stage 2 camp was due last Friday 14th May, please pay as soon as possible to secure your child's place.

OFFICE HOURS 8.30am to 3.15pm



Loose Parts Play

We are starting a new 'Loose Parts Play' program at school.

Loose Parts Play provides children with 'found' items which they can use for open ended and versatile exploration and play.

Loose Parts Play encourages creative and divergent thinking, problem solving, collaboration and invention.

Donations are a fundamental part of supporting **Loose Parts Play** programs- so if you have any of the following items we would gladly take them. A box has been set up in the school office.

Thanks,
Asha Lambert Patel

PVC pipes



Pots and pans



Milk crates



Kids gardening tools



Buckets or containers



Ropes and cord



*The cooler months are coming
and we are having a ...*



Limited Sizes available

Shirts—size 14—**\$25**

Shorts—Size 2, 4 and 14—**\$25**

Skirts—Size 16, 18 & 20—**\$35**

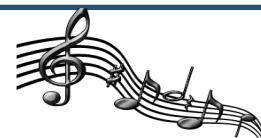
V-neck Jumpers—sizes 2 & 4—**\$20**

Spray Jackets—Sizes 4, 12, 14 & 16—**\$10** normally \$20

Track Pants—Size 8, 12 & 14—**\$10** normally \$20

Senior Jackets—Size 8 & 10—**\$15**—normally \$30

KIMP NEWS



Hi everyone, here at KIMP we are loving being in the middle of Term 2 with lots of new music to learn, performances to prepare for, quite a few students transitioning into Senior Band (which is VERY exciting!), new students moving into Intermediate Band (also VERY exciting) and lots of our beginners making good progress on their instruments and getting closer to band! When we think back to this time last year where Term 2 was Zoom lessons, not a face to face lesson in sight...let alone a band rehearsal or a performance!!! It's wonderful to appreciate just how great it is to be able to do what we do in KIMP and the power of music to make us all feel better.

As the mornings get colder an extra big thank you for the incredible support Kingy families give our band program by getting your children to rehearsals before school. We couldn't do it without you and I know it can make for some pretty hectic mornings at home!

Thanks again and have a great week

Have a great week.

Nicky Cooper
(and Mr Walsh and Mr Moodie!)
Kingscliff Instrumental Music Program
nicole.cooper15@det.nsw.edu.au

FREE COFFEE

Yes you read that right !!!!

Because parents haven't been in the school much over the past year the P&C want to encourage **all** parents to come in and say hi.

There will be a coffee van near the hall from **8:00-9:00am** Thursday morning so come in say hi and hopefully meet someone new.

AlsoThe school playgroup is running from 8:30 -11:00 so parents with small children can stay and enjoy everything our amazing playgroup offers.

When: 8:00 – 9:00am Thursday 20th May

Where: Near the hall

Small children welcome / encouraged



Our amazing PaL leaders have been doing a great job down in our kindy playground! They are busy creating a kind and caring environment for their younger peers



**WE BUILD
SURFBOARDS**
(07) 5523 1830



**PREMIUM
BOARD STORE
AND HARDWARE**
(07) 5523 1830



Kingscliff HEALTH
**MEDICAL CENTRE
OPEN 7 DAYS**

38-42 Pearl St, Kingscliff, NSW 2487
02 6670 1400 | kingscliffhealth.com.au

THE EASIEST WAY TO BUY
YOUR NEW CAR

motor\$cout 1300 341 751
www.MotorScout.com.au

A1 SKIPS
DON'T STRESS - LET US GET RID OF YOUR MESS
0418 992 111

ARROW
CONCRETE CUTTING
0413 871 174
"Concrete is not hard for us!"

wellness simplified

Leesa Young
Naturopath & Clinical Nutritionist

Stress ~ Hormones ~ Sleep
• simple, practical advice
• women's & children's health

leesa@leesayoung.com ~ 0400 077 220
Kingscliff + online appointments available

Mi Xue
Acupuncture & Traditional Chinese Medicine

0403 810 068 | michelle@mixue.com.au

WWW.MIXUE.COM.AU