

## DATES TO REMEMBER

<b>Thursday 11 November</b>	Kindergarten Orientation
<b>Friday 12 November</b>	Kindergarten Orientation
<b>Thursday 18 November</b>	Playgroup 9-11am
<b>Tuesday 23 November</b>	KHS Year 6 Orientation Day
<b>Friday 3 December</b>	Year 6 Interrelate begins
<b>Wednesday 8 December</b>	Year 6 Farewell Dinner
<b>Mon 13 &amp; Tues 14 Dec.</b>	Stage 3 Watersports
<b>Thursday 16 December</b>	Last School Day 2021

## PRINCIPAL NEWS

### Changes in restrictions- Department of Education Update

"Fully vaccinated parents and carers will be allowed on site to support curriculum delivery, vulnerable students or students with disability, student wellbeing activities and school operations (for example reading support, canteens and uniform shops), or to attend essential meetings (e.g. suspension meetings). Parents and carers must check in using the school check-in, show proof of vaccination on entry to the school site and follow mask-wearing requirements.

One fully vaccinated parent or carer is permitted to attend their child's Kindergarten orientation when conducted outdoors. A google form has been circulated to register for tours this week.

Parents and carers must follow their school's advice regarding student drop-off and pick-up, which will usually require parents to remain off school sites at these times. This includes staying in the car when dropping off and picking up children if it is safe to do so. This does not apply to drop-off and pick-up from outside of school hours care (OOSHC) as sign-in and out procedures are required for OOSHC.

Parents/carers that have to come onto school site only for a very short period of time do not need to be vaccinated. This could include for an orientation drop off, sick bay pick up, making a quick appointment, dropping off a forgotten lunch etc. But the parent/carers should minimise contact, follow physical distancing rules and leave the school site as quickly as possible - or in the case of an orientation/transition visit for a very young



<https://www.facebook.com/KingscliffPublicSchool>



[https://www.instagram.com/kingscliff\\_ps/](https://www.instagram.com/kingscliff_ps/)

child, as soon as supervision has been passed over to a school employee."

### Assemblies and Presentations

"Assemblies and presentations will be allowed outdoors on site. Cohorts should be separated with physical distancing in place where practicable.

Care must be taken to avoid mixing and mingling of cohorts when entering and exiting the assembly or presentation.

Fully vaccinated visitors (including parents and carers) are only allowed to attend if completing a specific role (such as presenting) and at the invitation of the school... "

At this stage Kingscliff PS is not having parents to our presentations. We are currently working on our format and will let the community know how this will be presented in due course. Our formal Student Leadership Assembly, where badges are pinned on, occurs in term 1, hopefully we will be able to include everyone in 2022.

Thank you all for your ongoing support as we navigate these last few weeks of term.

Please remember to complete the google form if there are any child's changes to your return to school in 2022. Link: <https://forms.gle/fDa4QZP1tFMjLUi7A>

Thank you,

**Diana Foley**  
Principal



**CONGRATULATIONS**



**PBL WINNERS**

Violet KN	Ally KN	Bastian 2G
Scarlett 2B	Mya 3/4L	Abbee 3/4A
Beau 5/6P	Chloe 5/6P	

## CANTEEN CORNER

School Canteen operates four days each week - Tuesday, Wednesday, Thursday & Friday



**PLEASE HAVE ORDERS IN BY 9:00 AM**

### VOLUNTEER ROSTER

<u>Thursday 11 November</u>	<u>Thursday 18 November</u>
Holly	Stacey
<u>Friday 12 November</u>	<u>Friday 19 November</u>
Rhys, Ashlee, Heather	Debbie

### **Volunteers Required**

***If you are interested in helping ,  
please contact the office on 02 6674 1467.***

*New volunteers will require Working With Children Checks.  
Please see the office for the paperwork.*

### PAYMENT OPTIONS

**EFTPOS** - at the school office only

**Online** - via the school website 'Make A Payment' tab.

**Please include online payment receipt number on the paper bag.**

**Cash** - correct money in the bag is appreciated.

**All orders require a paper bag with the students name, class and order details.**

**REMINDER - CANTEEN CLOSED MONDAYS**

## SCHOOL TRAVEL FOR 2022

2022 school travel applications are now open. Students who need a travel pass for 2022 can apply now. To apply go to **transportnsw.info**.



We ask that parents plan ahead and make sure their child knows which service/s to use and has a valid pass to use from the start of the school year.

Bus operators are flexible and understanding, particularly at the start of the school year, and will ensure students can travel safely to and from school. However, to best support our operators and assist in planning, we encourage all students to have a valid pass, as early as possible, from the start of the school year.

## SURFSIDE BUS LINES

### **Bus Incidents**

**131500 or [www.transport.nsw.gov.au](http://www.transport.nsw.gov.au)**

*(go to: Contact Us, Complaints, Buses)*

# Office News

## KIMP Payments

Please finalise all KIMP payments by Friday 19th November.

## Year 6 into 7 Orientation Day

Kingscliff High School are holding a Year 6 Orientation Day on Tuesday 23rd November. Permission forms have gone home with Year 6 students. Please return the form by Monday 15th November.

## Year 6 Farewell Dinner

A reminder that final payment is due on Friday 26th November. If you are unsure how much you are owing, please contact the office.

## Year 6 Interrelate Moving into the Teen Years

Year 6 Interrelate will be held on Friday 3rd December, Wednesday 8th December and Monday 13th December. Updated forms have gone home with students. Please return form and payment of \$25 (if you have not already paid) as soon as possible.

## Camp Goodenough Refunds

Refund forms have gone home with students. Please complete the forms and return to the office asap. If your child is in years 3, 4 or 5 and you would prefer the refund amount to be put on your child's school account for future payments, please indicate this on the form. Families that paid through the online payment system have already been issued a refund back to their account.

**OFFICE HOURS 8.30am to 3.15pm**

 **Thank You!** 



Thursdays 9:00-11:00am  
During SCHOOL TERM  
@ KINGSCLIFF Primary School Hall  
\$5 Per Session

A place for parents and carers with children 0-5 to play with their child/ren in a supported environment and connect with other parents.  
For further enquiries call the school  
(02) 66741467

## **PLAYGROUP'S BACK!** Thursday 18 November

### **PLEASE NOTE:**

*When attending Playgroup please remember to sign in using the QR code, wear a mask when entering the school grounds and show proof of vaccination.  
Thank you .*

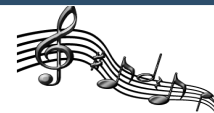
## Game Changer Challenge

Congratulations to our Year 6 students who took part in the Game Changer Challenge this week! 'Da Hive' tackled big problems surrounding sustainability and human consumption using an empathetic and creative approach. They then had to pitch their idea to a panel of judges and other competing schools from all over NSW. Their final idea involved using recycled building materials (from our new build) to create a learning hub where students could actively recycle and repurpose items from around the school and learn about sustainability and the environment.

Congratulations team! You did Kingy proud!



## KIMP NEWS



### KIMP 2022

It has been wonderful to see the interest in learning an instrument next year. Over the next couple of weeks we will be seeing those students who have returned a form and allocating places for next year. It is important to remember that there are a number of factors involved in allocating instruments and children may not necessarily get their first preference. However, many years of KIMP experience have shown me that in most cases they end up on an instrument that they enjoy and have a positive experience with. This year we have had a very large number of students wanting to play percussion, which is great, however there is not room in our KIMP bands to accommodate large numbers of percussionists and we want as many students as possible to be able to experience playing in a band. If your child doesn't receive their first choice, please encourage and support them to try whatever instrument they are given.

It is very exciting to be looking ahead to 2022, with lots of continuing students, new students and (fingers crossed) lots of performances!

Please email me with any questions or concerns.

### KIMP Busking

We have had to postpone our busking date and are hoping we will be able to do it towards the end of term.

Have a great week everyone,

Nicky Cooper  
(and Mr Walsh and Mr Moodie!)

Kingscliff Instrumental Music Program

[nicole.cooper15@det.nsw.edu.au](mailto:nicole.cooper15@det.nsw.edu.au)

## 2021 School Level Public Speaking Competition Results



### Stage 2

1st Place - Ruby F  
Highly Commended - Evie L  
Highly Commended - Anabella R  
Finalist - Mya H  
Finalist - Billie I  
Finalist - Kai F  
Finalist - Jack W  
Finalist - Clarence B

### Stage 3

1st Place - Indi H  
Highly Commended - Astrid Y  
Finalist - Millie H  
Finalist - Eve L  
Finalist - Milli T  
Finalist - Kirra B





Kingscliff Public School

Book Character Mufti Day



**MEDICAL CENTRE  
OPEN 7 DAYS**

38-42 Pearl St, Kingscliff, NSW 2487  
02 6670 1400 [kingscliffhealth.com.au](http://kingscliffhealth.com.au)



**Mi Xue**

Acupuncture & Traditional Chinese Medicine

0403 810 068 [michelle@mixue.com.au](mailto:michelle@mixue.com.au)

[WWW.MIXUE.COM.AU](http://WWW.MIXUE.COM.AU)

**ARROW**

**CONCRETE CUTTING**

**0413 871 174**

"Concrete is not hard for us!"

THE EASIEST WAY TO BUY  
YOUR NEW CAR



1300 341 751  
[www.MotorScout.com.au](http://www.MotorScout.com.au)

**A1 SKIPS**

DON'T STRESS - LET US GET RID OF YOUR MESS

**0418 992 111**



Leesa Young  
Naturopath & Clinical Nutritionist

Stress ~ Hormones ~ Sleep  
• simple, practical advice  
• women's & children's health

[leesa@leesayoung.com](mailto:leesa@leesayoung.com) ~ 0400 077 220  
Kingscliff + online appointments available

**SUPPORT YOUR LOCAL SURF STORE**

**THE  
BOARD  
LAB**

**THE  
BOARD  
LAB**

**THE  
BOARD  
LAB**

**SURFBOARDS AND SURF HARDWARE**

34 Industry Drive, Tweed Heads South, NSW 2486  
(07) 5523 1830 – [theboardlab.com.au](http://theboardlab.com.au)