

DATES TO REMEMBER

TERM 3

Week 9	Beach & Creek
Wednesday 18 Sept.	Stage 1 Swell Excursion
Friday 20 September	Stage 2 AFL Fun Day
Tuesday 24 September	Big Band to Wommin Bay
Friday 27 September	LAST DAY TERM 3

TERM 4

Monday 14 October	FIRST DAY TERM 4
Week 3	2020 Kindy Orientation Begins

ASSEMBLY TIMES

Whole School	11:45am	Monday weekly
ES1 - Kinder	11:50am	Wednesday odd weeks
STAGE 1 - Yr 1 & 2	12:45pm	Thursday odd weeks
STAGE 2 - Yr 3 & 4	12:30pm	Thursday even weeks
STAGE 3 - Yr 5 & 6	12:00pm	Wednesday even weeks

of Education Officers to gain an insight into education in Finland; a world renowned and highly successful education system. Such an exciting opportunity!



As a result, I will be away from school from Thursday, September 26 until October 21, week 2 of term 4. During that time Mrs. Mirana will be relieving as Principal and Mr. Bush will be relieving as Deputy Principal.

Beach and Creek Week

This is an exciting week in the Kingscliff Public School calendar. It is a time for us to celebrate where we live. Throughout the week our students will be out and about in the community, performing, visiting, learning about and appreciating our beautiful area. I know it will be a fun time for everyone. Thank you to all of the local businesses and organisations who assist us with activities throughout the week. It is very much appreciated.

Kindergarten Enrolments 2020

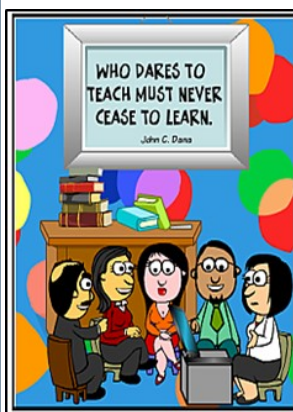


A reminder that enrolments are now being taken for Kindergarten 2020. NOW is the time to submit enrolment forms to the office and sign up for our transition days. Please remind your friends and your neighbours, planning is underway for 2020.

Diana Foley
Principal

PRINCIPAL NEWS

Staff Professional Learning



The staff will be engaged in professional learning after hours on Wednesday 25 September and Wednesday 30 October. These 2 evenings, are in lieu of using the professional learning day on December 19, after students are finished the 2019 school year. Guest facilitators will be presenting, 'The Management of Actual or Potential Aggression Foundation course' to all staff.

It is 6 hours of professional learning and will give staff more confidence in managing unforeseen circumstances in our classes or school environment in general. It is, sadly, quite common for teachers and support staff to face, manage and control aggressive incidents at school. This course helps us to understand the context and respond appropriately to each situation.

Staff Movement

Mr. Bush is currently on extended leave, travelling with his family. Mr. Wallace is Relieving AP for Stage 3, during Mr. Bush's absence. Miss Ferguson, Miss McMahon and Mr Prichard are also on leave, with their classes being taught by Cora Brownjohn, Kylie Walker and Jan Daly respectively.

Upcoming Study Tour

I have been very fortunate to have been accepted into a study tour, traveling to Finland, during the next school holidays. 26 educators from South Australia, Tasmania and New South Wales will be visiting a variety of schools and meeting with students, teachers and Ministry

PBL Winners Week 9

Congratulations.



TTFM (Tell Them From Me) Survey

The Tell Them From Me Survey is a complete evaluation system for measuring student engagement, well-being, classroom climate, and other factors known to affect learning outcomes. Information is captured from students, parents and teachers to inform school policy and practice.

We surveyed students from Years 4 - 6 earlier this year and now it is the parents/carers turn to give us valuable feedback.

To do this you need to type the web address below into your internet browser on your computer, ipad, tablet or mobile phone:

www.nsw.tellthemfromme.com/kps19

You will then get a series of questions to answer, which should take you about 15 mins. Thank you for engaging in our School's planning process.



SPORT NEWS

Congratulations to Harry K for representing the North Coast at the State Softball Championships last week. He had a great week in Tamworth.



KPS WasteWise Program Parent Survey

This survey is designed to investigate the opinions of parents and caregivers on Kingscliff Public School's future WasteWise program. Sustainability is an important issue and at Kingscliff Public School we have been exploring ways in which we could move our school towards a more sustainable future. The WasteWise School programs purpose is to educate our students and community about recycling and minimising waste to landfill. This survey is designed to investigate the opinions of parents and caregivers on Kingscliff Public School's future WasteWise program.

<https://www.surveymonkey.com/r/WGNMKNKE>

Office News

Stage 1 Cinderella Excursion

Please forward \$11 payment and permission note to the School Office by Friday 27 September.

Late payments will NOT be accepted.

Spare Shorts

We urgently require spare small shorts for the office to lend to students when toileting accidents occur. If you have any spare second-hand shorts that could be donated, please forward to the School Office.

OFFICE HOURS 8.30am to 3.00pm

Thank You!

Nude Lunchboxes

Week 2 has been another huge success with our Nude Lunchboxes! We have reduced our single use plastic waste by around 80% on these days.

We would like to extend another huge thank you to our parents and carers who have risen to the challenge.

It has been excellent to hear how engaged our students are with this topic, and see them taking responsibility for their waste.

Our stage winners for this week were, KR, 1H, 4L and we had a tie between 5/6P, 5/6S and 5/6H.

Next week is Week 3 of our Nude Lunchbox Days, let's make it our best yet!



THE S.R.C. ARE RECYCLING BREAD TAGS TO FUND WHEELCHAIRS FOR PEOPLE IN NEED AND WE'D LIKE YOUR HELP!

Calling all bread lovers! Whether you're a wholemeal, seeded grain, gluten free, thick sliced, thin sliced, bun, roll or english muffin type of person, there's something you all have in common. And we want it!

Hint: It's these tiny, colourful pieces of poison... whoops, we mean plastic.

We know many of you avoid bread in plastic bags and choose paper or reusable bread bags instead.

But this is for the odd occasions; the "I forgot the bread and the bakery has already closed" supermarket dashes, where collecting one of these tags is inevitable. In those cases, we want you to hold onto them for us.



Collect your bread tags and bring them to school. There is a collection container in every classroom!



PBL



Term 3 Week 9 Be Respectful:

Toilets and Bubblers.

I am respectful at the toilets and bubblers.

- Respect others privacy
- Use a calm inside voice
- Flush the toilet properly
- Keep area clean and tidy
- Treat the bubbler with respect



REMEMBER

Nude Lunchbox Days

**Monday, Weeks 8, 9 and 10
(September 9th, 16th and 23rd)**

How to Pack a Nude Lunchbox

Dos:

- ✓ Put snacks in a reusable container
- ✓ Put drinks in a drink bottle
- ✓ Use a reusable lunchbox or bag

Don'ts:

- ✗ Put food in plastic bags, cling wrap or foil
- ✗ Pack single use drink bottles, juice boxes, cans or cartons
- ✗ Pack single use or pre-packaged food items (packets of chips, biscuits etc.)



CANTEEN CORNER

School Canteen operates four days each week

Tuesday, Wednesday, Thursday & Friday

PLEASE HAVE ORDERS IN BY 9:15 AM

VOLUNTEER ROSTER



Thursday 19 September

Kylie

Friday 20 September

Holly, Cath, Shae, Trish & Paulette

Thursday 26 September

Kylie & Nadia

Friday 27 September

Deb, Paulette, Shae & Trish

We are always looking for new volunteers, if you are interested in helping even for just an hour once a term, please contact the office on 0266 741 467.

New volunteers will require Working With Children Checks.

Please see the office for the paperwork

PAYMENT OPTIONS

EFTPOS—This is only for Parents / Carers to use NOT children Online—via School Stream or the school website.

Please include online payment receipt number on the paper bag.

Cash—correct money is appreciated.

All orders require a paper bag with the students name, class and order details.

REMINDER - CANTEEN CLOSED MONDAYS

KIMP NEWS



KIMP Blows Rowan Robinson Park away!

It was a wild and windy day for Senior Band's Beach and Creek Week Concert but the sun was shining and we had an enthusiastic crowd to perform for. Congratulations and thank you Senior Band on an awesome performance under difficult conditions - all part of the fun!

Tuesday sees **Intermediate Band** head to **Pottsville** for a workshop with their band which we are really looking forward to. It has been wonderful to see the progress our KIMP beginners have made this term. Well done everyone!

Next Tuesday sees our **Big Band** head down to entertain the residents at **Wommin Bay** again. This is a really special morning and we are all looking forward to it!

Thank you!

Nicky Cooper

nicole.cooper15@det.nsw.edu.au

Community News



Kingscliff Swimming

We're Back

It's that time of year again to get ready for Swim Club sign on. Swim Club is a great way for kids to have fun and learn about competition swimming. It doesn't matter if you have been swimming all winter or if you are just starting up again for summer - swim club provides every level of swimmer an opportunity to compete in a fun environment and learn more about competitive swimming.



SIGN ON/INFORMATION NIGHT
17 September 2019 - 5.00PM TO 6.30PM:

FIRST CLUB NIGHT
24 September 2019 from 5.30pm
Entry fee to pool: \$3.50 per person

Food will be available for purchase from the BBQ throughout the night commencing 24.9.19

Swim Club is held every Tuesday night, during school terms, at 5.30pm with racing starting at 6.00pm sharp.

Membership Fee: \$ 100 - for 9 yrs & over swimmers, includes a Swim Cap
\$ 90 - for 8 yrs & under swimmers, includes a Swim Cap
\$ 25 - Non-swimmers

Chocolate Box Guessing Competition

The Schools Spectacular Dancers from Kingscliff Primary School are holding a fun guessing competition.

\$1 a guess for the chocolate box!!

So bring your \$1 on Wednesday, Thursday or Friday in Week 9 and guess how many chocolates are in the box.

The winning guess will be announced in Monday's assembly in Week 10.

NSW Department of Education

Before and After School Care Have your say

The NSW Government is committed to increasing the provision of before and after school care.

Have your say at

<https://www.service.nsw.gov.au/basc>

Online feedback closes December 2019



THIS WEEK AROUND THE SCHOOL

North Coast Athletics

Congratulations to all athletes that competed last Friday.

3 relay teams made it through to the State Championships -

Junior Girls, Senior Girls and Senior Boys.

Well done to Mieka H. for placing 3rd in the 1500m and is now also off to State.

A big thank you to Super Coach John!



A1 SKIPS

DON'T STRESS - LET US GET RID OF YOUR MESS

0418 992 111

Aussie Kids Fun & Fitness
Outside School Hours Care
@ Cudgen Primary School
ENQUIRES: 0413974775



The Poolman
KINGSCLIFF

Services...

- MOBILE POOL SERVICE
- EQUIPMENT SALES & REPAIRS
- POOL HEATING & SUPPLIES
- ON LINE POOL SHOP
- FOR ALL YOUR POOL NEEDS

TONY RHODES
0417 345 882

Lic No. 23/225 212491C

EJ ELECTRICAL

1300 DIAL EJ
3 4 2 5 3 5
www.ejelectrical.net

Servicing The Gold Coast and Northern NSW

NADIA STONE
lifestyle photography

For family, motherhood, sessions, to capture raw memories
Call Nadia Stone Photography today to book
Price starts at 250 AUD
ph :0423 253 354
info@nadiastonephotography
www.nadiastonephotography.com

TILING CONTRACTOR

Floors & Walls
Quality Work
25 Years Experience

Phone Mike Sawyer 0414 071 486

NSW Lic 157084C

ARROW

CONCRETE CUTTING

0413 871 174

"Concrete is not hard for us!"

Glenn Newell
Plumbing Services

24 Hour Emergency, Household Plumbing,
Strata, Real Estate & Commercial

0418 412 394

e: gnewell1@bigpond.com
Lic No. 103083C